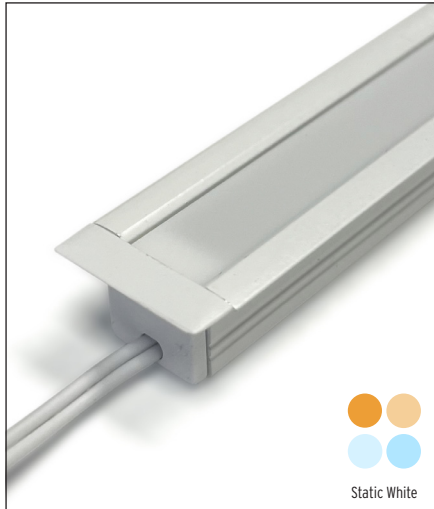


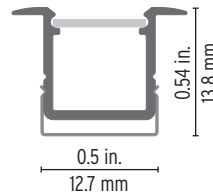
RecessedMount Slim - Assembled Fixture



Contour 1212 is our smallest recessed profile and perfect for furniture lighting due to its form factor. The clips ensure an easy and quick installation. The channels and optics are field cuttable and provide heat sink for LED tapes. White finish.

Features

- Delivered in standard 6.5 ft (2 m) lengths.
- Extra heatsinking to accommodate low power LED tapes.
- Its use increases the lifetime of your LED strip.
- Compatible with recessed installation accessories.
- Cable Feed: End (E)



Project name _____

Fixture type _____ Phase _____

Specifier _____ Date _____

ETL Intertek ETL Listed

IC Driver: Constant light output

TJ Away: Exceptional Thermal Dissipation

Reel-to-Reel: High Quality Solder Free Reels

One Bin Only: 3 MacAdam up to 90 CRI

Dot Free: L80/B10 >60,000 hrs

Wxxx/339: Wxxx/339

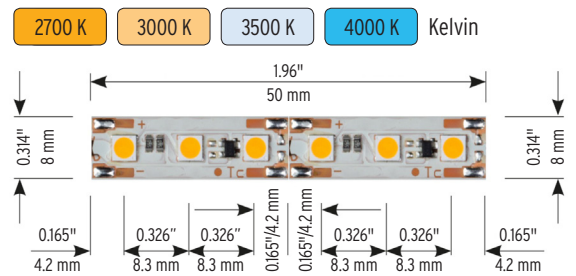
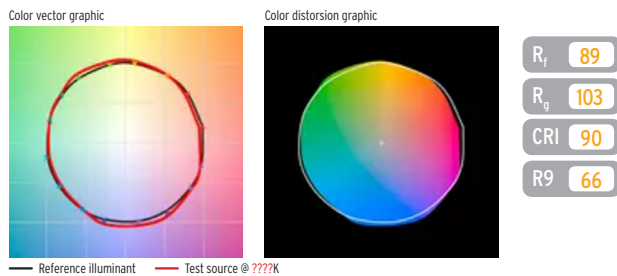
IES LM79/LM80 Compliant: IES LM79/LM80 Compliant

Order Code

Family	LED Tape ¹	CRI	CCT	Optic	Cable / Connector ²	Cable Position	Mounting ³	Fixture length (mm)	Ingress
VarioLED 1212	-----	W9	---	LO	---	E	---	-----	IP20
Recessed Slim	HD10-3.0 w/ft, 300 lm/ft	W9 90CRI	27 2700K	LO Low-Opal	FM Female & Male (4")	E End	CC Countersink Clip	Refer to length chart on page 2	IP20
	HD17-5.2 w/ft, 490 lm/ft		30 3000K		MS Male one side only (4")		FMC Flat Mounting Clip		
			35 3500K		OB Open Cable both sides (6.5')				
			40 4000K		OS Open Cable one side only (6.5')				

¹ Delivered Lumens @3000K with no Optic. ² 2 x 22 AWG wires are supplied. See page 3 for more connectors. ³ See Components spec sheet for details.

LED Tape Specifications



	HD10			HD17			HD10		HD17	
		CCT	Lumen/ft ^A	W/ft ^B	Lumen/ft ^A	W/ft ^B				
Static White	●	W927	2,700 K	300	3.0	480	5.2	Power (W/ft) ^B	3.0	5.2
	●	W930	3,000 K	300	3.0	490	5.2	Efficacy (lm / W) ^B	108	102
	●	W935	3,500 K	310	3.0	510	5.2	Max length (ft)	27.9	23.0
	●	W940	4,000 K	320	3.0	520	5.2	CRI / R9 (up to)	90 / 66	90 / 66
							R _t / R _v	89 / 103	89 / 103	
							Temp. Tc-point (Ta _{max})	158°F/70°C	158°F/70°C	
							Max ambient temp. (Ta _{max})	122°F/50°C	122°F/50°C	

^A Lumen values represent bare LED tape. Refer to page 2 to calculate delivered fixture lumens by using the light efficiency percentages.
^B The given data are typical values. Due to tolerances of the production process and the electrical components, values for light output and electrical power can vary up to 10%.

Technical Details

LOW OPAL

50% light efficiency



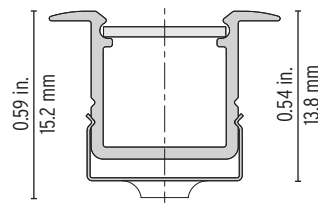
Dot free

5% warmer CCT offset

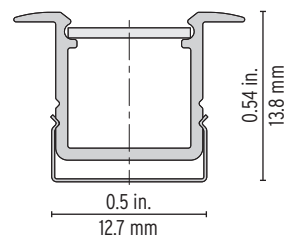
This lens provides a homogenous line of light.

Mounting Dimensions

Countersink Clip





Flat Clip



LENGTH CHART - End Feed (E)

Fixture length		HD10 3.0 Watts/Ft		HD17 5.2 Watts/Ft	
inches	mm	Watts/fixture	Lumens/fixture @3000K	Watts/fixture	Lumens/fixture @3000K
2.8	70	0.7	69	1.2	113
4.7	120	1.2	118	2.0	193
6.7	170	1.7	167	2.9	273
8.7	220	2.2	216	3.8	354
10.6	270	2.7	266	4.6	434
12.6	320	3.1	315	5.5	514
14.6	370	3.6	364	6.3	595
16.5	420	4.1	413	7.2	675
18.5	470	4.6	462	8.0	755
20.5	520	5.1	512	8.9	836
22.4	570	5.6	561	9.7	916
24.4	620	6.1	610	10.6	996
26.4	670	6.6	659	11.4	1077
28.3	720	7.1	708	12.3	1157
30.3	770	7.6	758	13.1	1238
32.3	820	8.1	807	14.0	1318
34.3	870	8.6	856	14.8	1398
36.2	920	9.1	905	15.7	1479
38.2	970	9.5	954	16.5	1559
40.2	1020	10.0	1004	17.4	1639
42.1	1070	10.5	1053	18.2	1720
44.1	1120	11.0	1102	19.1	1800
46.1	1170	11.5	1151	20.0	1880
48.0	1220	12.0	1200	20.8	1961
50.0	1270	12.5	1250	21.7	2041
52.0	1320	13.0	1299	22.5	2122
53.9	1370	13.5	1348	23.4	2202
55.9	1420	14.0	1397	24.2	2282
57.9	1470	14.5	1446	25.1	2363
59.8	1520	15.0	1496	25.9	2443
61.8	1570	15.4	1545	26.8	2523
63.8	1620	15.9	1594	27.6	2604
65.7	1670	16.4	1643	28.5	2684
67.7	1720	16.9	1692	29.3	2764
69.7	1770	17.4	1742	30.2	2845
71.7	1820	17.9	1791	31.0	2925
73.6	1870	18.4	1840	31.9	3005
75.6	1920	18.9	1889	32.7	3086
77.6	1970	19.4	1938	33.6	3166

Connectors

Item	Description	Model	Dimensions	Order Code
	Mini Female Connector IP20 for Static White Use to connect the driver to the beginning of the LED tape run or to the next LED tape section. Female mini connector on one side and open end cable on the other side.	Static White	2 x 22 Awg, 6.5 ft	15000147
	Mini Extension IP20 for Static White Use to extend the distance between connection points. Female mini connector on one side and male mini connector on the other side.	Static White Static White	2 x 22 Awg, 3.2 ft 2 x 22 Awg, 6.5 ft	15000148 15000149

VOLTAGE DROP INFORMATION FOR THE FEED-IN LINE (From Driver to Fixture)


	Cable Cross Section							
	Run length		Max. cable length between driver and LED tape					
	feet	m	AWG 22		AWG 15			
			feet	m	feet	m		
HD 10	3.3	1	63.6	19.4	280.8	85.6		
	6.6	2	31.8	9.7	140.4	42.8		
	9.8	3	20.9	6.4	93.5	28.5		
	13.1	4	15.7	4.8	70.2	21.4		
	16.4	5	12.4	3.8	56.1	17.1		
	19.6	6	10.4	3.2	46.5	14.2		
	22.9	7	8.8	2.7	40.0	12.2		
HD 17	3.3	1	37.4	11.4	165.6	50.4		
	6.6	2	18.7	5.7	82.6	25.2		
	9.8	3	12.4	3.8	55.1	16.8		
	13.1	4	9.1	2.8	41.3	12.6		
	16.4	5	7.2	2.2	32.8	10.0		
	19.6	6	6.2	1.9	27.5	8.4		
	22.9	7	5.2	1.6	23.6	7.2		

Calculation refers to the cable configuration on-site. Calculation based on a max. voltage drop of 0.85 V.

Compatible Drivers

Item	Specifications	Downloads
LED LINEAR™ Non-Dimmable Drivers 	<ul style="list-style-type: none"> • UL 8750 Listed Enclosure - With Built-In Junction Boxes • Universal Input Voltage 120V - 277V • IP65 - For Both Indoor and Outdoor Use • No Minimum Load Requirement • 24V Constant Voltage Output, Class 2 • Available in three wattages 30W, 60W and 96W • Max. Dimensions: 12-1/8" x 2-3/8" x 1-3/8" 	30 W SPEC SHEET 60 W SPEC SHEET 96 W SPEC SHEET INSTALLATION INSTRUCTIONS
LED LINEAR™ 0-10V Dimmable Drivers 	<ul style="list-style-type: none"> • UL 8750 Listed Enclosure - With Built-In Junction Boxes • 0-10V Dimmable - Flicker Free Down to 1% • Universal Input Voltage 120V - 277V • IP65 - For Both Indoor and Outdoor Use • 24V Constant Voltage Output, Class 2, Class P • Available in three wattages 30W, 60W and 96W • Max. Dimensions: 12-1/8" x 2-3/8" x 1-3/8" 	30 W SPEC SHEET 60 W SPEC SHEET 96 W SPEC SHEET INSTALLATION INSTRUCTIONS
LED LINEAR™ ELV/Triac Dimmable Drivers 	<ul style="list-style-type: none"> • UL 8750 Listed Class 2 Enclosure • 24V constant voltage output • Compact size yet high efficiency and performance in dry and damp environments (IP67) • Multiple Inputs: 120V or 277V • Fully dimmable: ELV Dimmers - Reverse or Adaptive Phase Control, Trailing Edge • Available in two wattages 48W and 96W • Multiple Circuits are available up to 4 units (up to 384W) 	48 W SPEC SHEET 96 W SPEC SHEET INSTALLATION INSTRUCTIONS
 MEAN WELL PWM Dimmable Drivers 	<ul style="list-style-type: none"> • Universal AC input / Full range (up to 305VAC) • Constant voltage PWM style output • Built-in 3 in 1 dimming function (0-10Vdc or PWM signal or resistance) • Dimming range : 0-100% • Class 2 power unit • Suitable for dry / damp / wet locations • UL Recognized component, 5 years warranty 	40 W SPEC SHEET 60 W SPEC SHEET 90 W SPEC SHEET INSTALLATION INSTRUCTIONS
 LUTRON Dimmable Drivers 	<ul style="list-style-type: none"> • UL Listed Enclosure • Dimming Range: 100% to 1% and 0.1% (Premiere) • LED lighting turns on to any dimmed level without flashing to full brightness • Operating Voltage: 120V~ to 277V~ at 50/60 Hz • Rated lifetime of 50,000 hours at 40°C (104°F) ambient temperature and maximum loading • For rated warranty, ambient temperature not to exceed 40°C (104°F) • Open-circuit protected output 	HI-LUME SPEC SHEET HI-LUME PREMIERE SPEC SHEET INSTALLATION INSTRUCTIONS
eldoLED DALI/DMX Dimmable Drivers 	<ul style="list-style-type: none"> • Available in linear or rectangular format • 100W, DMX/DALI interface for Static White, Tunable White and RGB/W Applications • 4 control channels • 24V constant voltage, 4 x 24V outputs • Metal or plastic case options 	100 W SPEC SHEET INSTALLATION INSTRUCTIONS

Controllers

Item	Specifications	Downloads
eldoLED Controllers 	180/D DMX Controller for RGB/W and Tunable White Applications	180/D SPEC SHEET
	210/D Dali Controller for Static White Applications	210/D SPEC SHEET
	211/D-LG 0-10V Logarithmic Dimming Controller	211/D-LG SPEC SHEET
	211/D-LN 0-10V Linear Dimming Controller	211/D-LN SPEC SHEET
	212/D DMX Controller for Static White and Static Color Applications	212/D SPEC SHEET
	DimWheel DMX Wall Controller for RGB/W and Tunable White Applications	DIM WHEEL SPEC SHEET

Click for more information

VOLTAGE DROP CALCULATOR

INSTALLATION

LED LINEAR TECHNOLOGY